

THS Executive

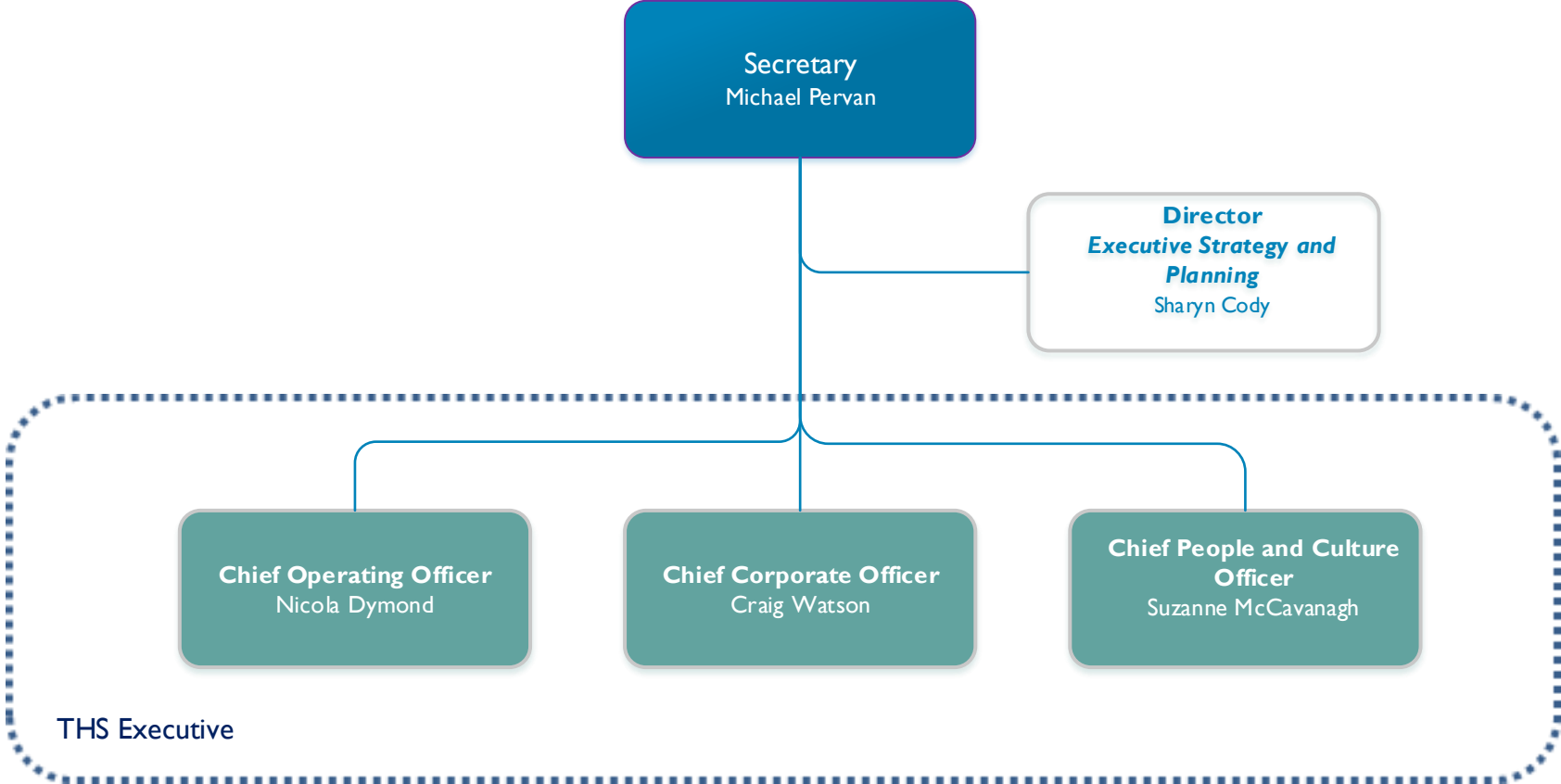
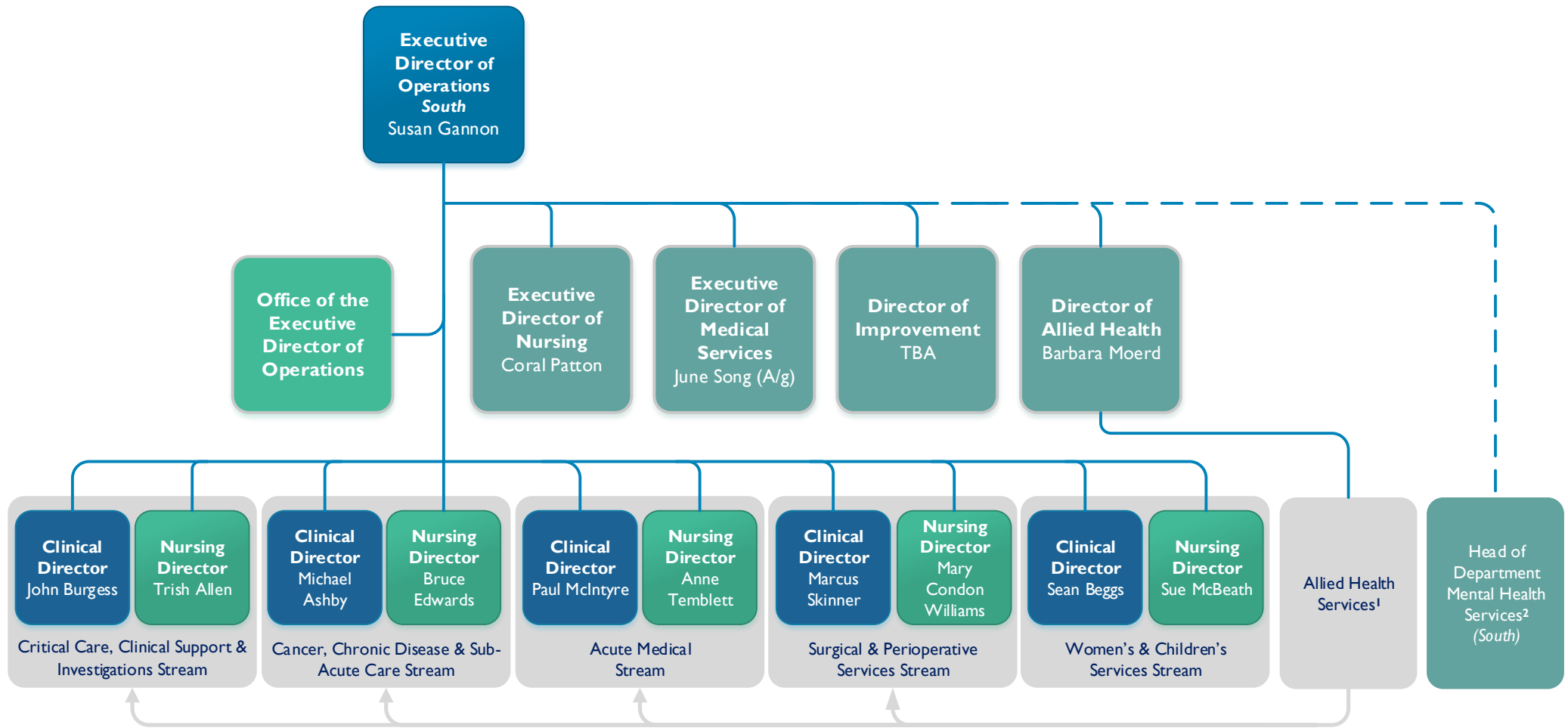


Figure I – THS Executive Structure

# Royal Hobart Hospital and Associated Facilities and Services



**Note 1**  
The Allied Health Structure will be managed via a separate process. Current reporting lines and allied health operations continue to operate as normal.

**Note 2**  
The Heads of Department for Acute Mental Health will participate in local facility senior management committees. Formal reporting lines are reflected in the Statewide Mental Health Structure.

**Figure 2 - Existing and Proposed Operational Structure (RHH)**

# Launceston General Hospital and Associated Facilities and Services

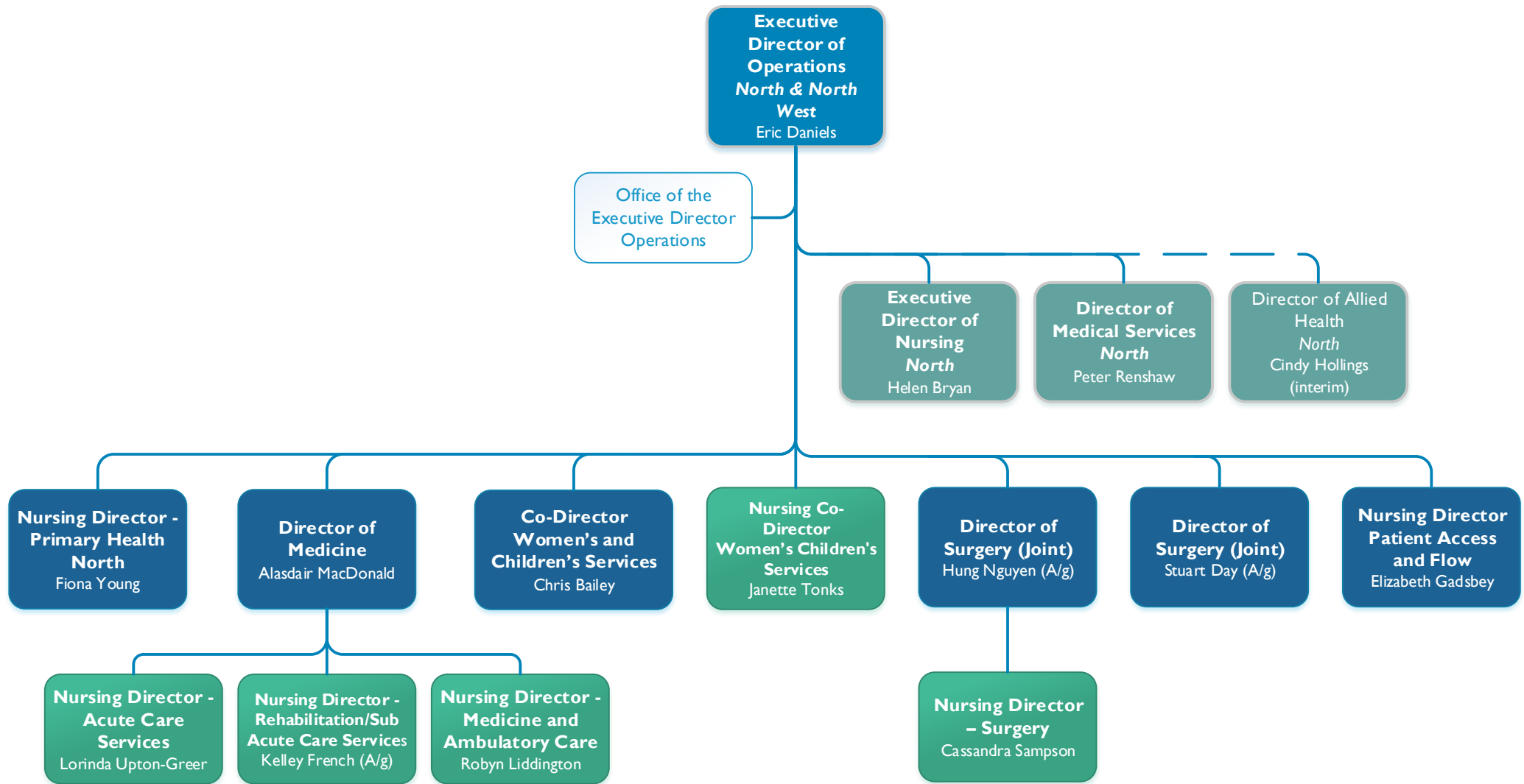
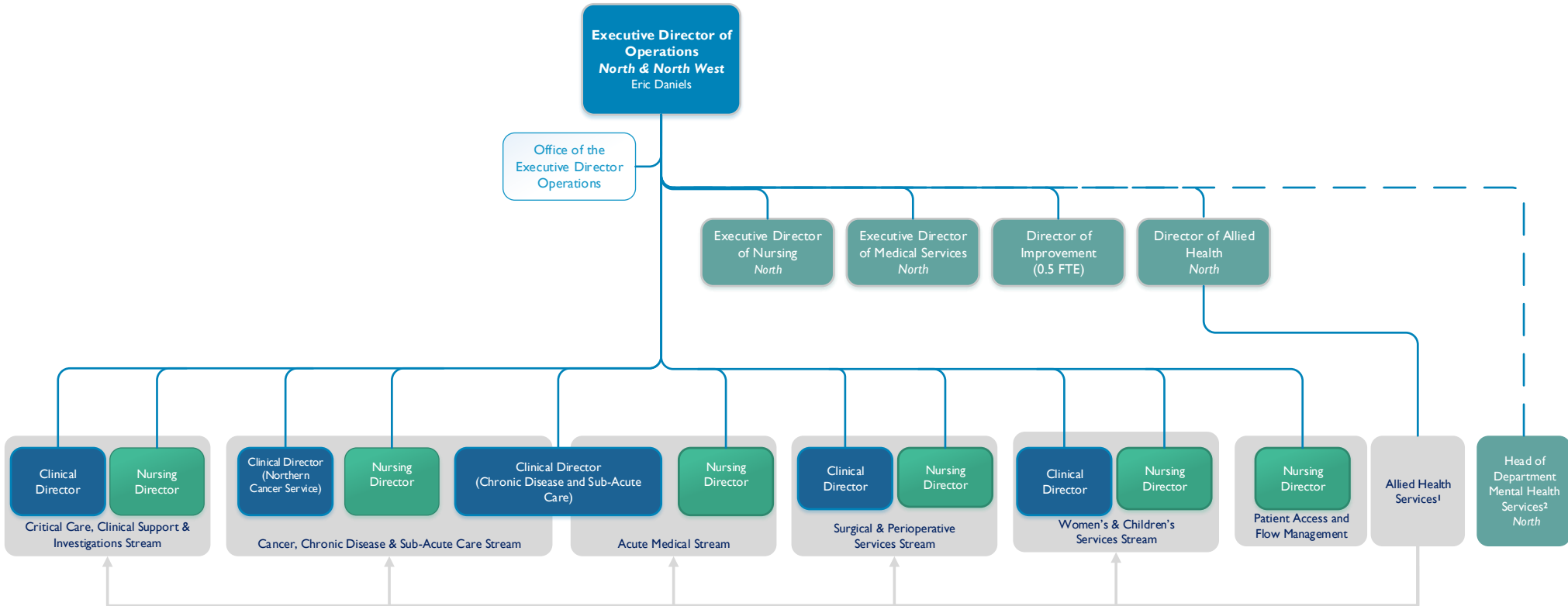


Figure 3 - Existing Transitional Operational Structure (LGH)

# Launceston General Hospital and Associated Facilities and Services

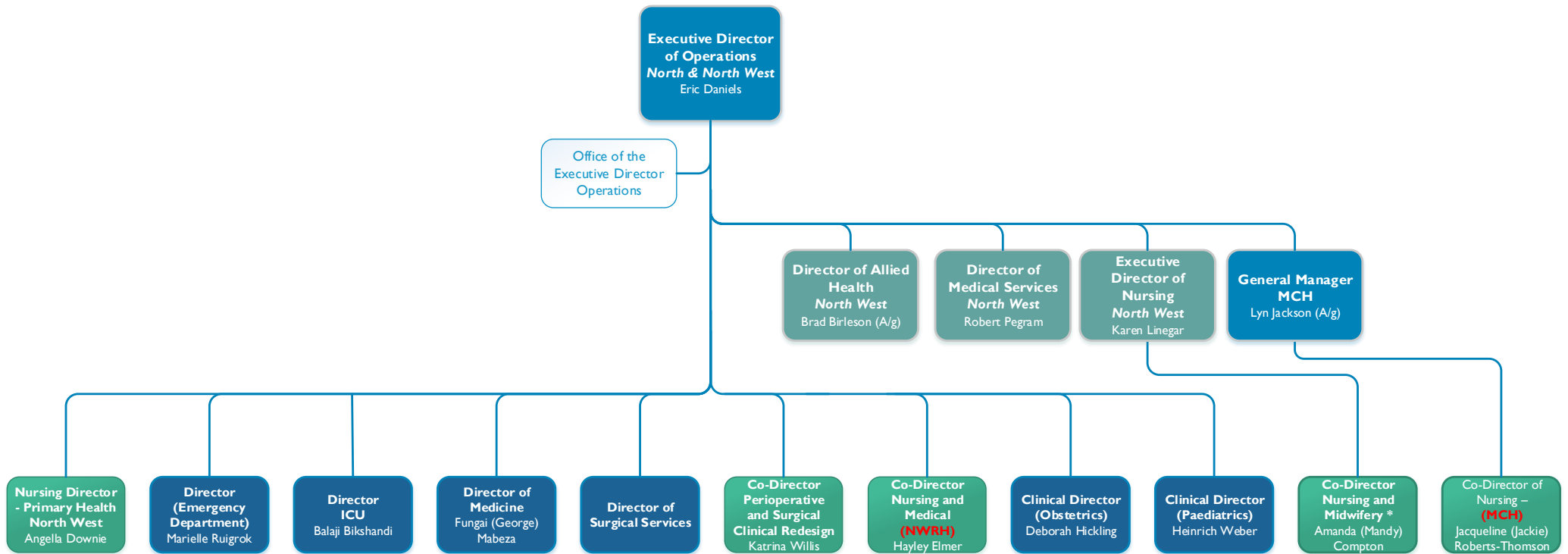


**Note 1**  
The Allied Health Structure will be managed via a separate process. Current reporting lines and allied health operations continue to operate as normal.

**Note 2**  
The Heads of Department for Acute Mental Health will participate in local facility senior management committees. Formal reporting lines are reflected in the Statewide Mental Health Structure.

**Figure 4: Proposed Operational Structure (LGH)**

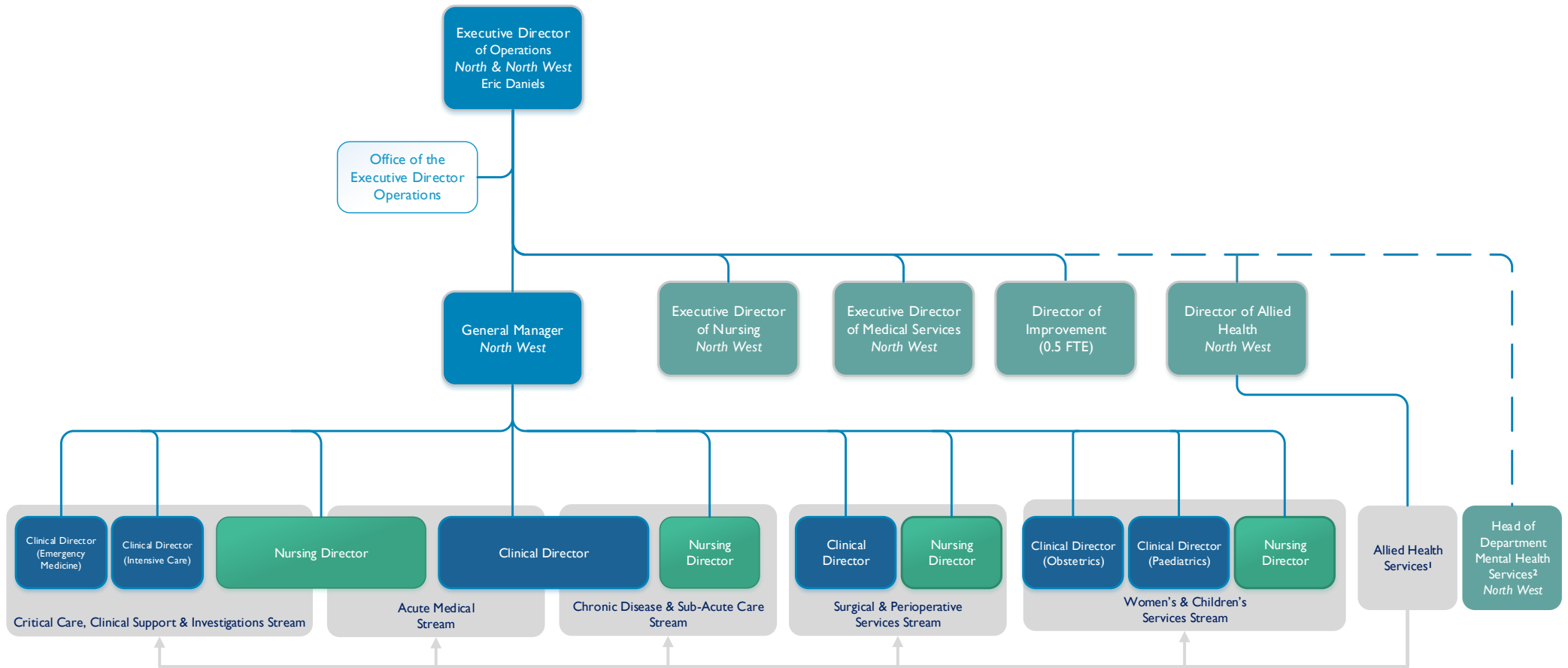
# North West Regional Hospital and Mersey Community Hospital and Associated Facilities and Services



\* As an interim measure, in advance of transitioning to a future organisational model, the position of Co-Director Nursing and Midwifery will be adjusted to include the responsibility of operational oversight of NWRH.

Figure 5 - Existing Transitional Operational Structure (NWRH and MCH)

# North West Regional Hospital and Mersey Community Hospital and Associated Facilities and Services



**Note 1**  
The Allied Health Structure will be managed via a separate process. Current reporting lines and allied health operations continue to operate as normal.

**Note 2**  
The Heads of Department for Acute Mental Health will participate in local facility senior management committees. Formal reporting lines are reflected in the Statewide Mental Health Structure.

**Note 3**  
A local facility manager will be retained to support the effective delivery of services within each facility

**Figure 6 - Proposed Operational Structure (NWRH and MCH)**

# Statewide Mental Health Services

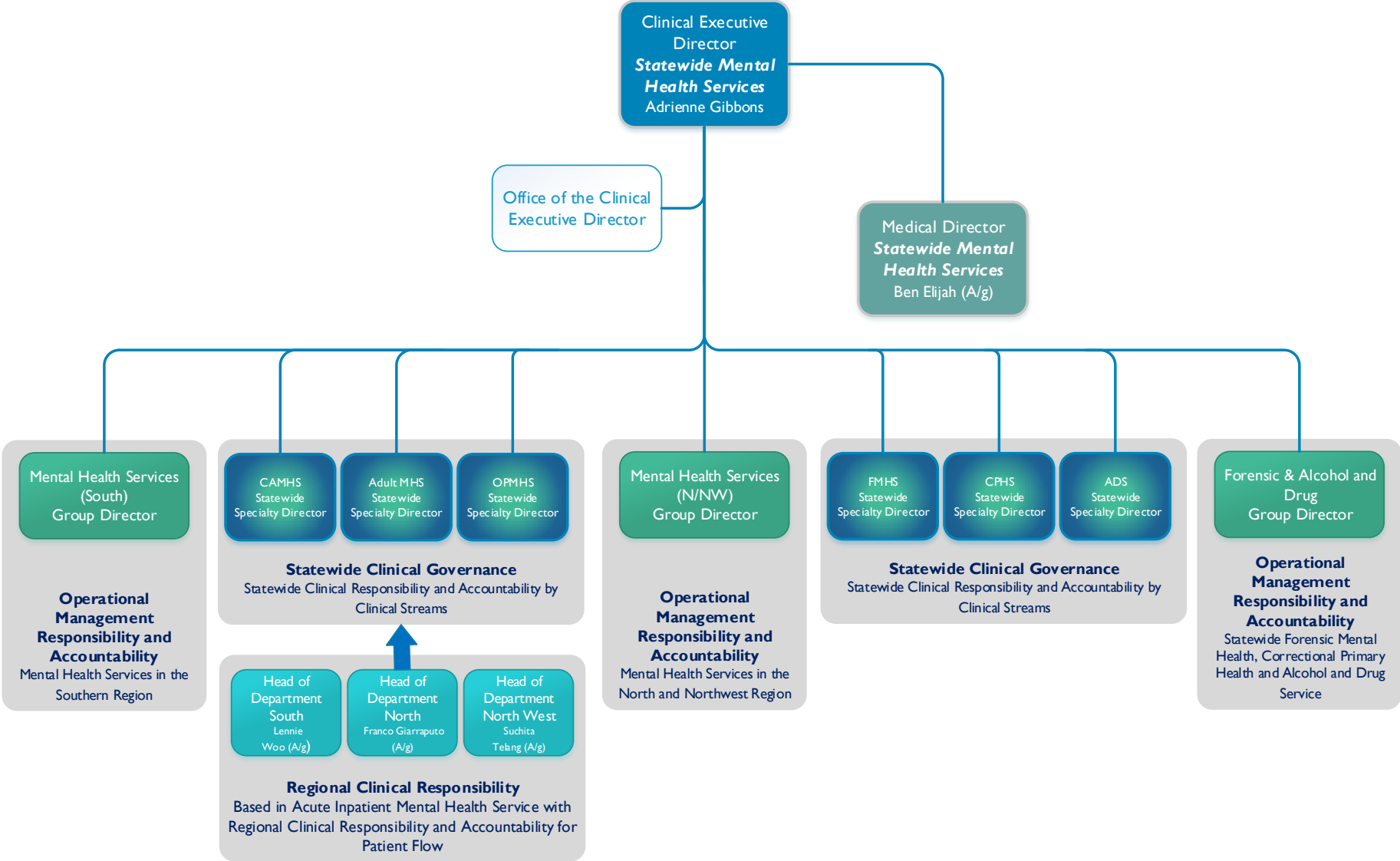


Figure 7 - Statewide Mental Health Services Operational Structure